



FX350 | FX450 | FX600 SOFTMOUNT WASHER-EXTRACTORS



TOUCH CONTROL AVAILABLE
Multilingual user-friendly 7" touch control



CLOUD-BASED PLATFORM
to easily monitor your laundry everywhere and at any time



IMPROVED DURABILITY
for your peace of mind with a 3-year warranty



AUTOMATIC WEIGHING SYSTEMS
Automatically adapts amount of water and detergent based on the wash load



CASCADE DRUM TECHNOLOGY
Extra mechanical action thanks to its cascading shape of the surface

FEATURES & BENEFITS

Features

- Stainless steel drum and tub
- Patented soap hopper
- Easy Soap™ - liquid soaps connection
- Easy access to all vital parts from the front
- Large door opening for easy loading & unloading
- 2x large drain valves (Ø 76 mm)
- Ergonomic height of door and control position for an easy operation
- Bumper (front side protection)

Options

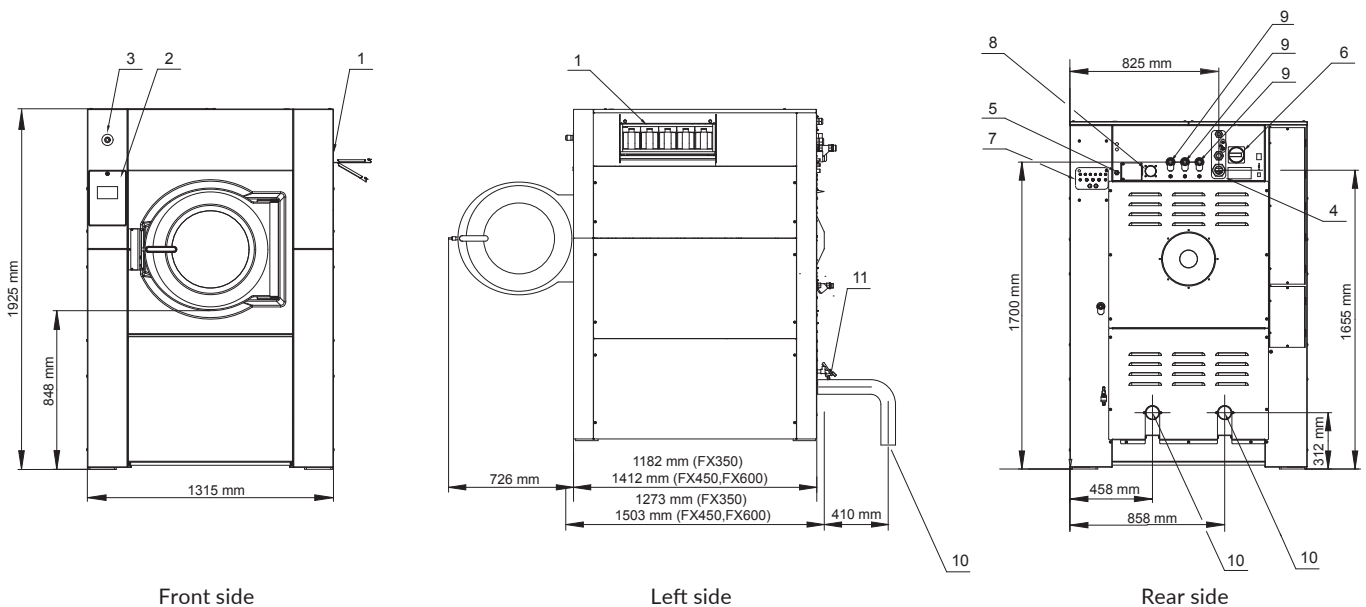
- Liquid soap connection and pumps
- Water recovery kit
- Steam heating version
- 3rd water inlet
- Recycle drain valve and double door glass Execution
- Insulation for energy and heat & noise reduction
- Extra signalization (orange light + sound)
- Air operated water inlets
- Automatic weighing system through 4 weighing cells
- Tilting system: assists operators during loading & unloading

Control

- XControl FLEX PLUS - fully programmable and customizable cycles 7" touch screen.
 - User-friendly screen with operating instructions built in as part of the control
 - Complete control content available in 34 languages
- XControl - fully programmable control with 20 Pre-set programs and memory up to 99.

SPECIFICATIONS

TYPE		FX350	FX450	FX600
INNERDRUM				
Capacity 1:09	kg (lb)	39 (86)	50 (110)	67 (148)
Capacity 1:10	kg (lb)	35 (77)	45 (99)	60 (132)
Volume	litres	351	452	601
Diameter	mm	914	914	1035
DRUM SPEED				
Wash	rpm	38	38	36
Extraction	rpm	839	839	788
G-FACTOR				
		360	360	360
HEATING				
Electricity	kW	24	36	54
Steam	bar	3-8	3-8	3-8
Sound pressure level	dB (A)	<75	<75	<75
Water valves connection	BSP	1"	1"	1"
Water pressure	kPa	100-800	100-800	100-800
Rec. water pressure	kPa	300-500	300-500	300-500
Water inlet	l/min	518	518	518
Drain valve	outer Ø mm	2x76	2x76	2x76
Flow amount with drain valve	l/min	2x 210	2x 210	2x 210
Steam valve connection	BSP	3/4"	3/4"	3/4"
Steam pressure	kPa	300-800	300-800	300-800
DIMENSIONS				
Size H×W×D	mm	1925x1315x1270	1925x1315x1502	1925x1315x1502
Net weight	kg	1010	1350	1500
TRANSPORT DATA				
Packed H×W×D	mm	2125x1425x1470	2125x1425x1700	2125x1425x1700
Gross weight	kg	1170	1490	1640



- | | | |
|--------------------------|---|----------------------|
| 1. Soap hopper | 5. Electrical connection to liquid soap | 9. Water connection |
| 2. Keyboard | 6. Main switch | 10. Drain valve |
| 3. Emergency stop | 7. Liquid soap pump connections | 11. Water Sample Tap |
| 4. Electrical connection | 8. Air vent tub | |